



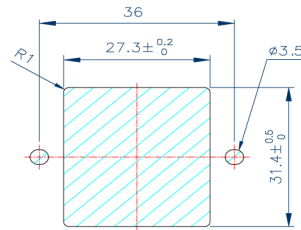
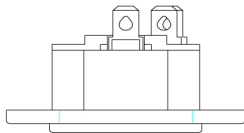
宏钰电子（嘉善）有限公司
HONGYU ELECTRICAL (JIASHAN) CO.,LTD.

Add:No,69 Jinxiu Road East City Development Zone,
Jiashan,Zhejiang,China
Tel:86 573 84062088 , 84062188
Fax:86 57384062898
http://www.hongyuzj.com
E-mail:henry@hongyuzj.com

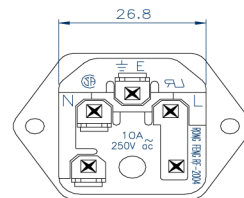
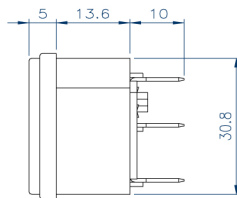
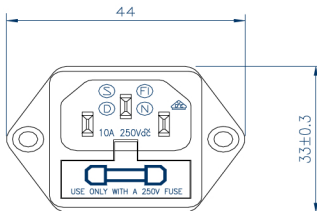
POWER INLET 5x20MM FUSE HOLDER

RF-2004-C

STANDARD:IEC 320-1 C14
STANDARD:IEC 320-1 C14
RATING :10A250V AC
APPROVALS:UL/CSA/VDE/DEMKO/
NEMKO/SEMKO/FIMKO



PANEL CUTOUT DIMENSION TABLE



| | | |
|------------|-----|--|
| RF-2004-C- | 6.3 | |
| | 6.3 | |
| | 4.8 | |
| | 4.0 | |
| | 2.8 | |